

CANDIDATE
NAME

| |
|--|
| |
|--|

CENTRE
NUMBER

| | | | | |
|--|--|--|--|--|
| | | | | |
|--|--|--|--|--|

CANDIDATE
NUMBER

| | | | |
|--|--|--|--|
| | | | |
|--|--|--|--|



BIOLOGY

9700/22

Paper 2 AS Level Structured Questions

October/November 2016

1 hour 15 minutes

Candidates answer on the Question Paper.

No Additional Materials are required.

READ THESE INSTRUCTIONS FIRST

Write your Centre number, candidate number and name on all the work you hand in.

Write in dark blue or black pen.

You may use an HB pencil for any diagrams or graphs.

Do not use staples, paper clips, glue or correction fluid.

DO **NOT** WRITE IN ANY BARCODES.

Answer **all** questions.

Electronic calculators may be used.

You may lose marks if you do not show your working or if you do not use appropriate units.

At the end of the examination, fasten all your work securely together.

The number of marks is given in brackets [] at the end of each question or part question.

This document consists of **17** printed pages and **3** blank pages.

Answer **all** the questions.

1 Match the description for each of statements **A** to **E** to a correct cell structure.

A Double membrane-bound organelle, absent in animal cells, that produces ATP.

.....

B Partially permeable membrane surrounding the large permanent vacuole of plant cells.

.....

C Formed from microtubules during mitosis.

.....

D Has peptidoglycan as one of its major components.

.....

E Site of assembly of 80S ribosomes.

.....

[5]

[Total: 5]

2 Phloem sap containing sucrose is transported in phloem sieve tubes from the source to the sink.

- (a) A student carried out an experiment using Visking tubing to investigate osmosis. The student prepared a sucrose solution to represent phloem sap at the source. This was put into Visking tubing that was tied at one end, so that the tubing was approximately 75% full.

The rest of the procedure is summarised in Fig. 2.1. The tubing was removed after 20 minutes, dried and re-weighed.

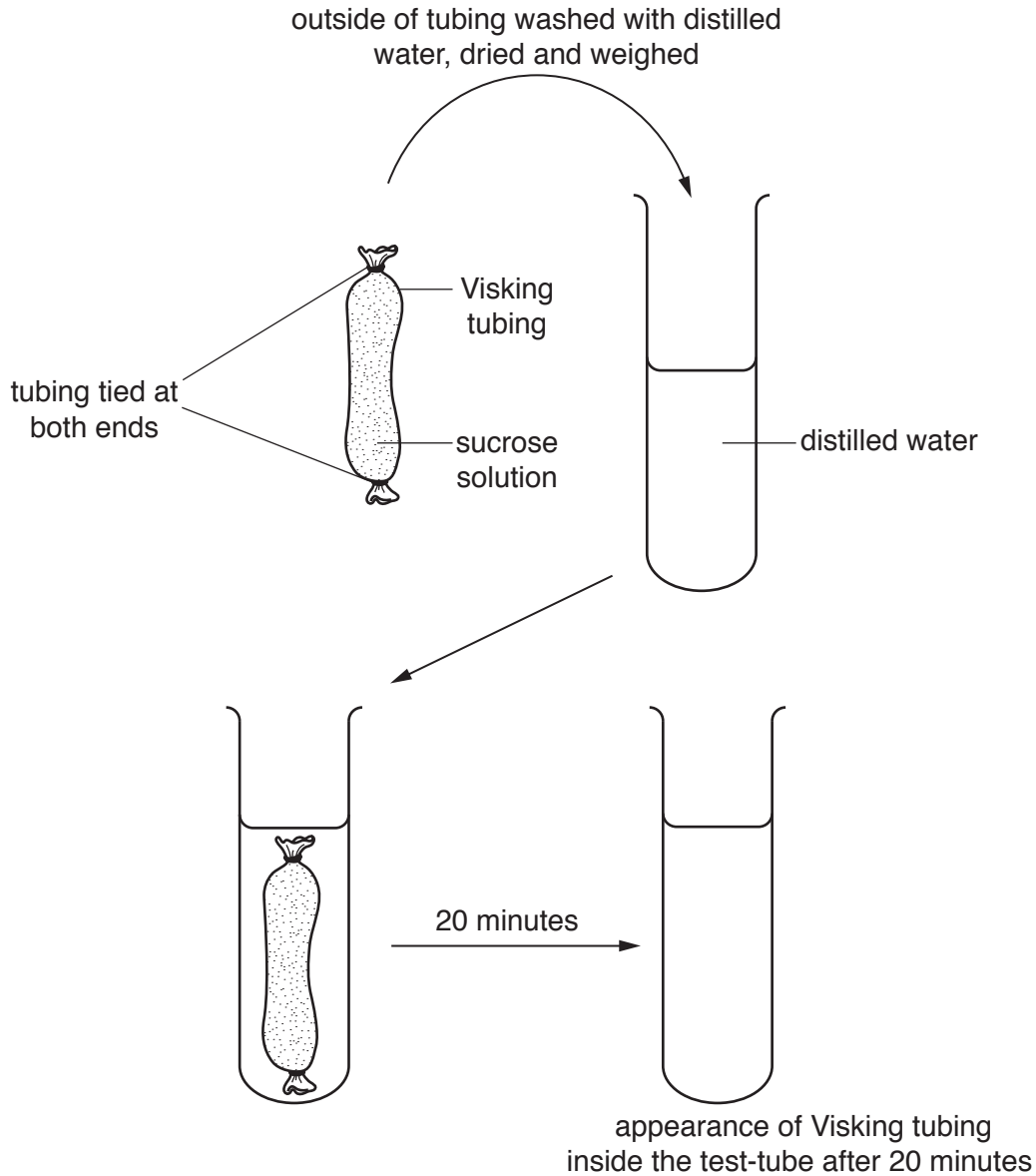


Fig. 2.1

- (i) Complete Fig. 2.1 to show the appearance of the Visking tubing inside the test-tube after 20 minutes. [1]

- 3 High fructose corn syrup, made from maize, can be used as a replacement for sucrose to sweeten food and drink products.

Commercial production of high fructose corn syrup involves the enzyme glucose isomerase, extracted from bacteria.

- (a) Fructose and sucrose are both sugars.

State two structural differences between fructose and sucrose.

1

.....

.....

2

.....

..... [2]

- (b) The glucose isomerase used in the production of high fructose corn syrup is extracted from a strain of a bacterium, *Thermus thermophilus*, which is found in hot springs. The enzyme has an optimum temperature of 95 °C.

Suggest **and** explain the advantages of using glucose isomerase from *T. thermophilus* to produce high fructose corn syrup, rather than using glucose isomerase that has an optimum temperature of 37 °C.

.....

.....

.....

.....

.....

.....

.....

..... [3]

Table 3.2

| first position | second position | | | | third position |
|----------------|-----------------|-----|------|------|----------------|
| | U | C | A | G | |
| U | phe | ser | tyr | cys | U |
| | phe | ser | tyr | cys | C |
| | leu | ser | STOP | STOP | A |
| | leu | ser | STOP | trp | G |
| C | leu | pro | his | arg | U |
| | leu | pro | his | arg | C |
| | leu | pro | gln | arg | A |
| | leu | pro | gln | arg | G |
| A | ile | thr | asn | ser | U |
| | ile | thr | asn | ser | C |
| | ile | thr | lys | arg | A |
| | met | thr | lys | arg | G |
| G | val | ala | asp | gly | U |
| | val | ala | asp | gly | C |
| | val | ala | glu | gly | A |
| | val | ala | glu | gly | G |

[Total: 12]

4 Fig. 4.1 is a cross-section of a human renal artery, a vessel that supplies blood to the kidney.

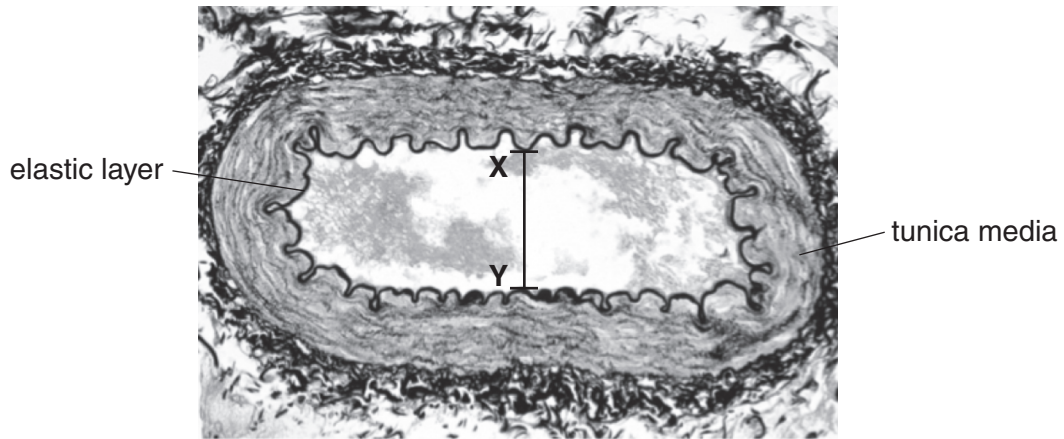


Fig. 4.1

- (a) The elastic layer shown in Fig. 4.1, located between the endothelium and the tunica media, is one feature that suggests that the blood vessel is the renal artery and not the renal vein, which may be of a similar size.

Complete the sentence to state **one** additional structural feature, **visible in Fig. 4.1**, that would identify the blood vessel as an artery.

This is an artery because it has
.....
.....
.....[1]

- (b) Explain the relationship between the structure of the tunica media and the function of an artery, such as the renal artery.

.....
.....
.....
.....
.....[2]

- (c) The actual diameter of the lumen of the renal artery at the point **X–Y** in Fig. 4.1 is 5.2 mm.

Calculate the magnification of the image shown in Fig. 4.1. Write down the formula you will use to make your calculation and show your working.

| |
|----------------|
| <i>formula</i> |
|----------------|

magnification \times [3]

- (d) Blood plasma contains approximately 90% water. Many of the properties of water are due to its ability to form hydrogen bonds.

Outline how the properties of water make it ideal as the largest component of plasma.

.....

.....

.....

.....

.....

.....

..... [3]

[Total: 9]

(b) Fig. 5.1 is a summary of some infectious diseases.

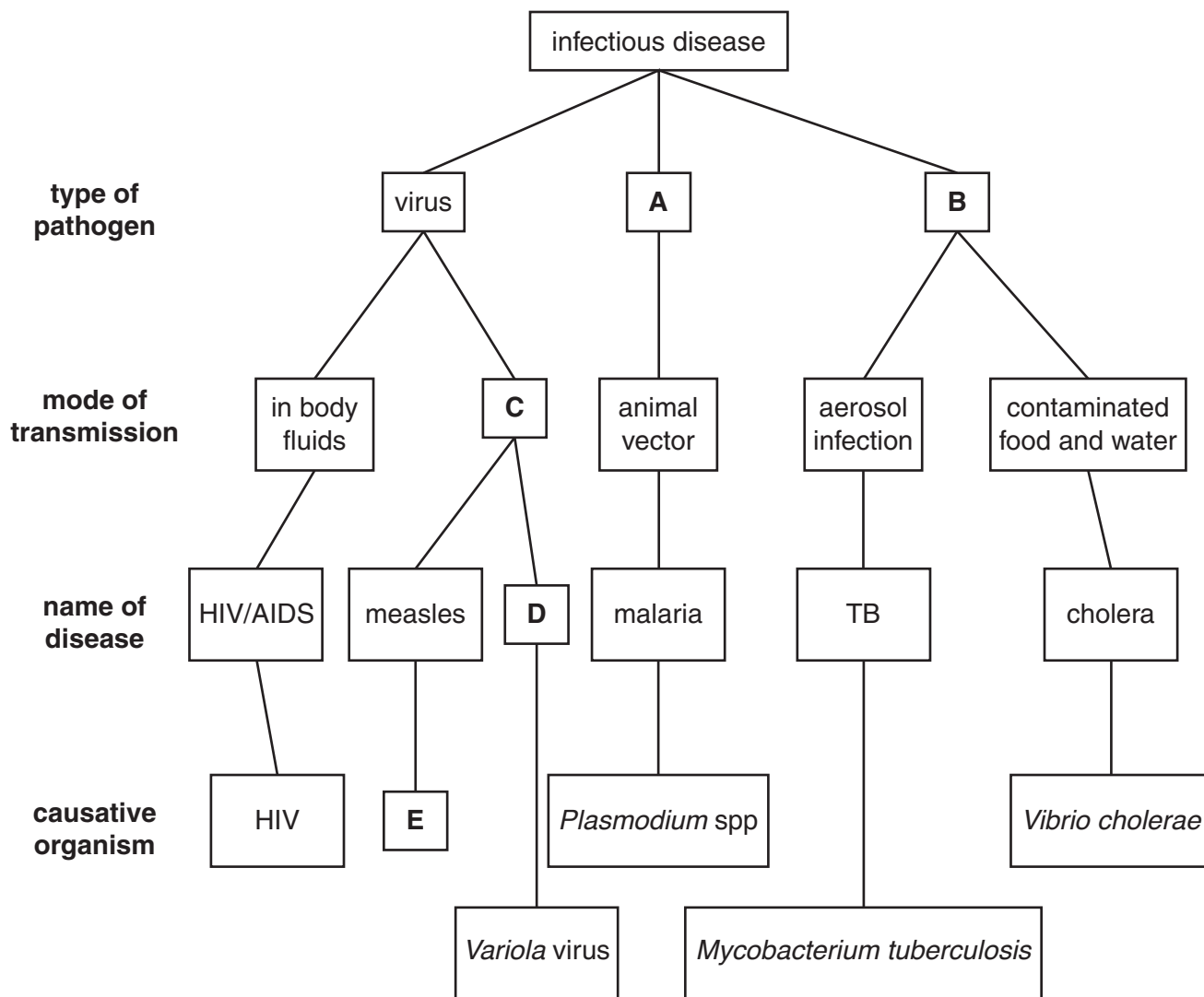


Fig. 5.1

Use the information in Fig. 5.1 to answer parts (i) to (iv).

(i) Name the type of pathogen represented by **A** and **B**.

A

B [2]

(ii) State the mode of transmission represented by **C**.

..... [1]

(iii) Name the disease represented by **D**.

..... [1]

(iv) Name the causative organism represented by **E**.

..... [1]

6 (a) Fig. 6.1 represents one complete cell cycle for a eukaryotic cell.

(i) Complete Fig. 6.1 by naming the stages represented by **J**, **K** and **L**.

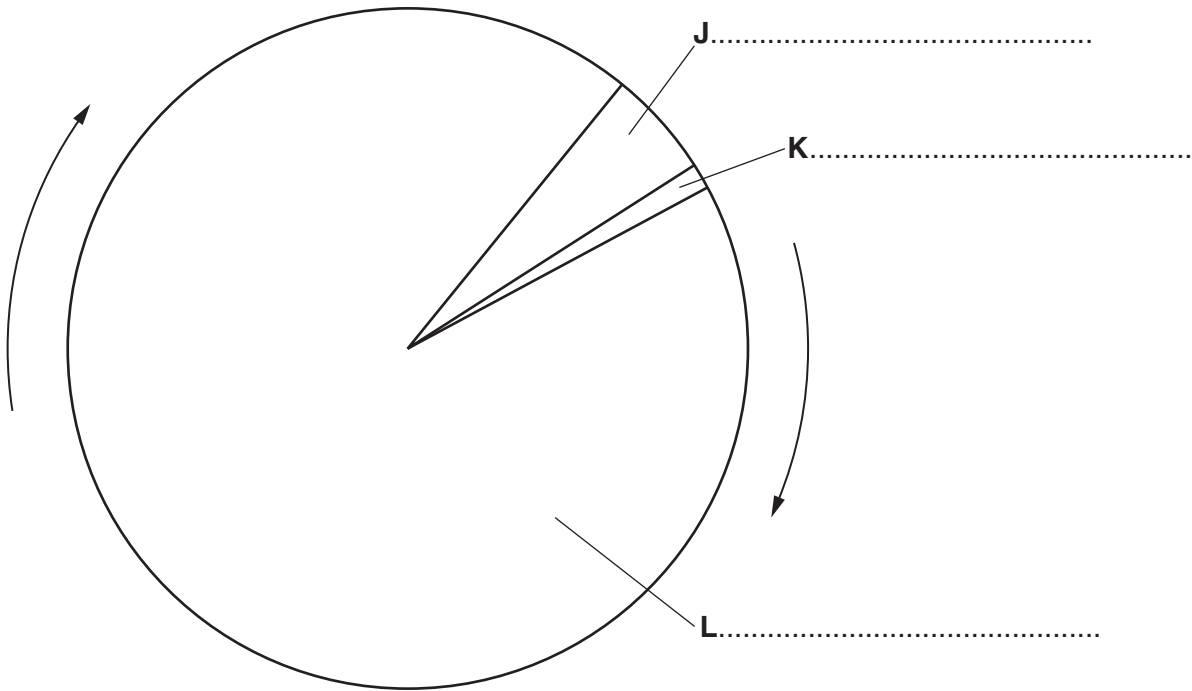


Fig. 6.1

[3]

(ii) Name the stage in the cell cycle in which semi-conservative replication of DNA occurs.

.....[1]

The development of stem cells to become neutrophils occurs in several stages. Some of these stages are capable of cell division.

Fig. 6.2 is a summary of neutrophil development. Some details of cellular structure are included.

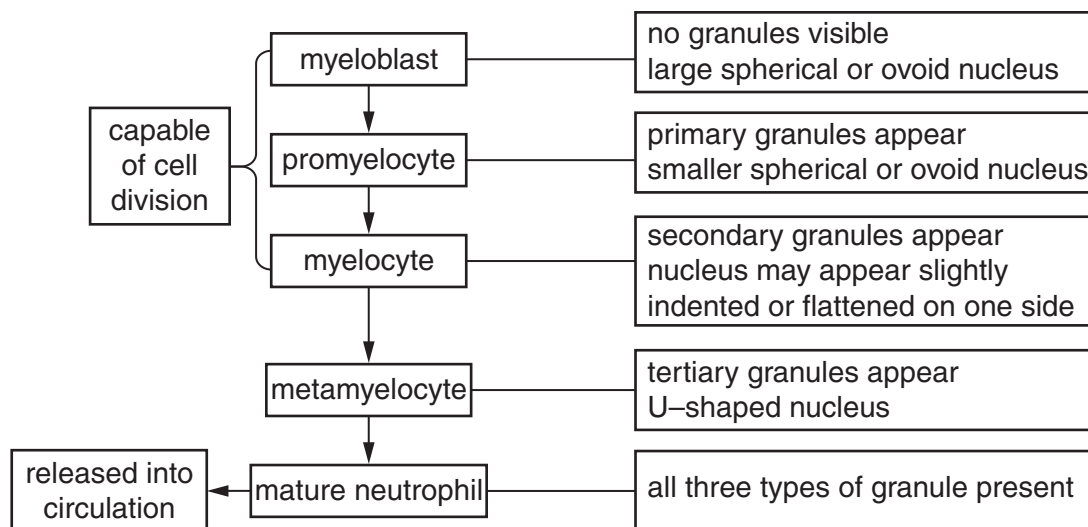


Fig. 6.2

All three types of granule indicated in Fig. 6.2 are membrane-bound cell structures containing hydrolytic enzymes. Each type of granule contains a different group of enzymes and other chemicals that enable the neutrophil to carry out its role.

(b) (i) State the location in the body where development and maturation of the neutrophil occurs.

.....[1]

(ii) Describe the shape of the nucleus in the mature neutrophil.

.....[1]

(iii) State the alternative name of the cell structures described in Fig. 6.2 as “granules”.

.....[1]

- (c) (i) Primary granules contain proteins known as defensins. These bind to cell surface membranes of bacteria and form very small pores in the membrane.

Suggest how defensins contribute to the role of the neutrophil in killing bacteria.

.....
.....
.....
.....
.....[2]

- (ii) Secondary granules contain lysozyme. This is an enzyme that breaks bonds in peptidoglycan molecules.

Explain how the action of lysozyme will lead to the destruction of the bacterial cell.

.....
.....
.....
.....
.....[2]

[Total: 11]

BLANK PAGE

Permission to reproduce items where third-party owned material protected by copyright is included has been sought and cleared where possible. Every reasonable effort has been made by the publisher (UCLES) to trace copyright holders, but if any items requiring clearance have unwittingly been included, the publisher will be pleased to make amends at the earliest possible opportunity.

To avoid the issue of disclosure of answer-related information to candidates, all copyright acknowledgements are reproduced online in the Cambridge International Examinations Copyright Acknowledgements Booklet. This is produced for each series of examinations and is freely available to download at www.cie.org.uk after the live examination series.

Cambridge International Examinations is part of the Cambridge Assessment Group. Cambridge Assessment is the brand name of University of Cambridge Local Examinations Syndicate (UCLES), which is itself a department of the University of Cambridge.